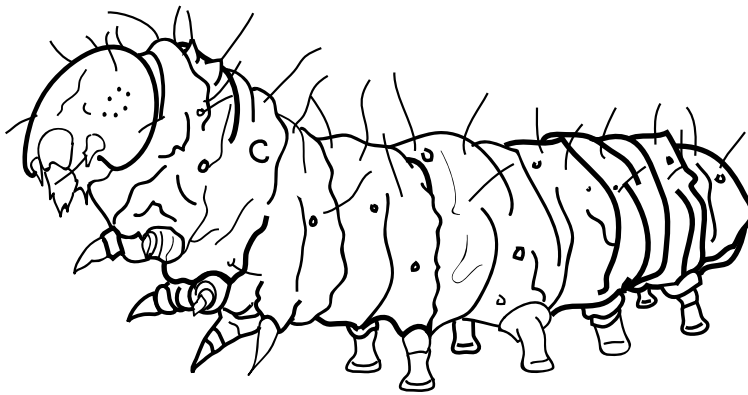


Name _____

Date _____

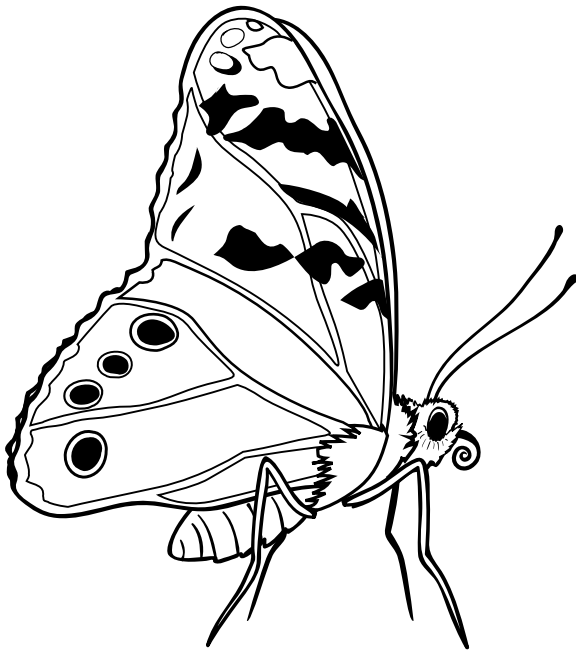
Directions: Read each question carefully and choose the best answer. Then circle the letter beside the answer you have chosen.

1. Why does a caterpillar need strong jaws?



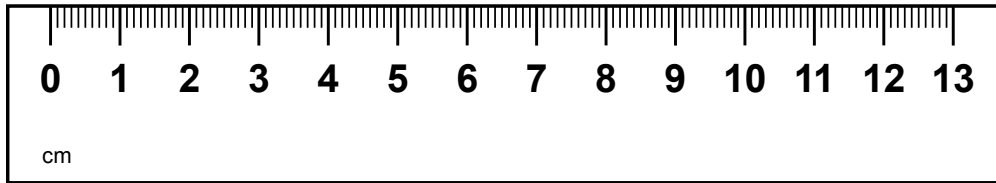
- A. to pull its body along
- ☒ B. to eat leaves
- C. to eat other insects
- D. to send messages

2. A butterfly sips nectar for food. Why does it need a long tongue?



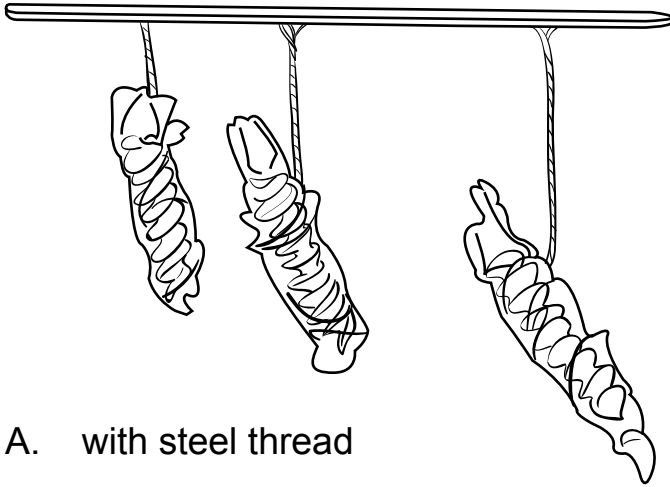
- A. so it can keep balanced
- B. to help it bury eggs in the ground
- C. to smell and see nectar
- ☒ D. so it can reach down into flowers

3. A caterpillar grows quickly. Which set of measurements could show the growth of a caterpillar?



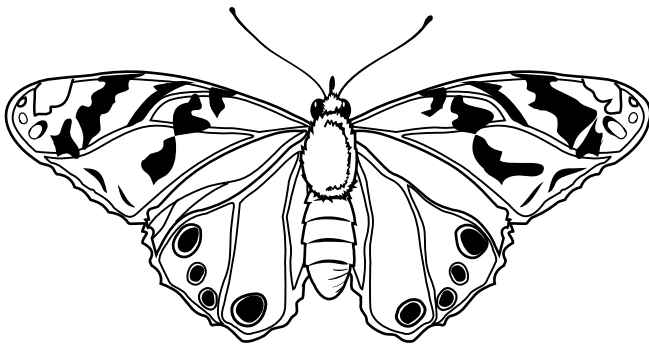
- ☒ A. $\frac{1}{2}$ cm, 1 cm, 2 cm
- B. 3 cm, $\frac{1}{2}$ cm, 1 cm
- C. 4 km, 3 km, 2 km
- D. 1 g, 2 g, 5 g

4. You made a model of a chrysalis and used string to attach it to a craft stick. How does a real chrysalis hang from a branch?



- A. with steel thread
- B. with cotton fibers
- ☒ C. with silk
- D. with glue

-
5. Which two body parts help a butterfly find and collect food?



- ☒ A. antennae and proboscis
- B. legs and bristles
- C. thorax and jaws
- D. wings and abdomen

6. Humans increase in size as they grow and develop. Which tool can be used to measure those changes?

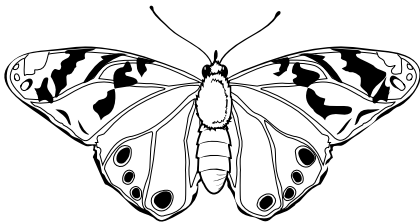


- A. measuring cups
- ☒ B. meter stick
- C. cylinder
- D. clock

7. Which behavior helps butterflies save energy?

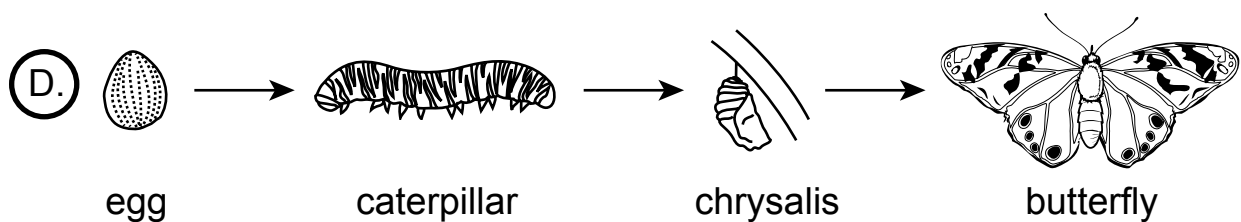
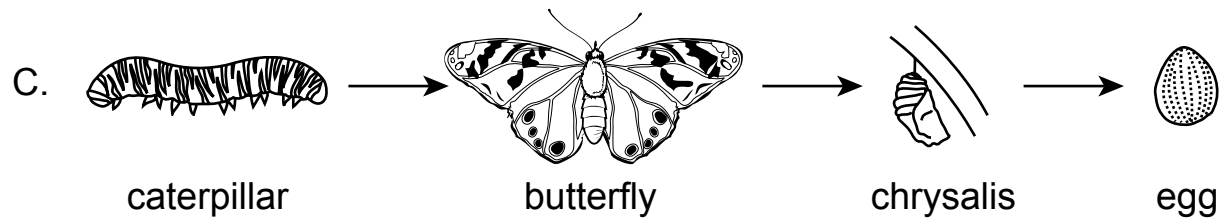
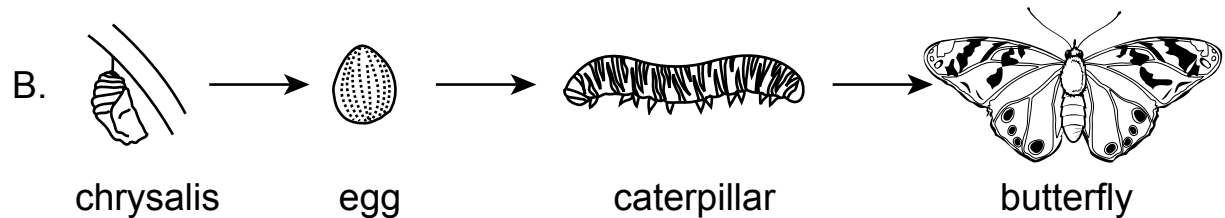
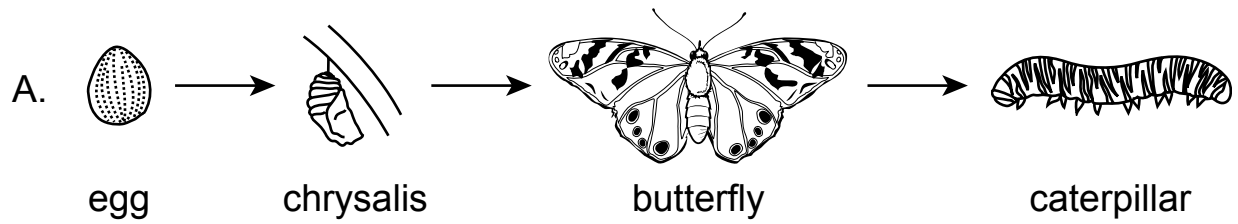
- A. mating and laying eggs on leaves
- ☒ B. gliding in the air and letting the wind push them
- C. searching for food
- D. flying from flower to flower

8. What do butterflies need to survive?

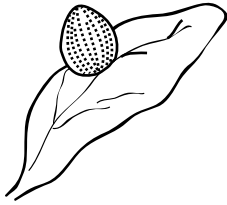


- A. food, cold water, plants, and light
- B. a home, warm weather, food, and oceans
- ☒ C. water, food, air, and a habitat
- D. air, oxygen, clean houses, and sunlight

9. Which of these shows the correct order of the life cycle of the butterfly?



10. Why do spiders and butterflies lay eggs?



- ☒ A. to reproduce the species
 - B. to use up energy
 - C. to practice certain behaviors
 - D. to attract other species
-

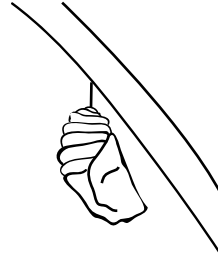
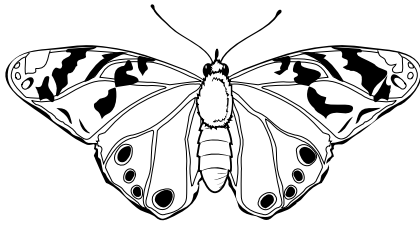
11. Which description is true?

- A. Every chrysalis is soft and brightly colored.
 - B. The caterpillar's stiff body grows slowly.
 - ☒ C. The upside down chrysalis may be shaped like a J.
 - D. A caterpillar almost never moves around.
-

12. When a butterfly emerges from its chrysalis, it looks wet and crumpled. What changes happen later?

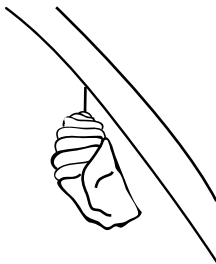
- A. It gets bigger, and its legs puff up.
- B. The butterfly gets smaller.
- ☒ C. It dries off and the wings unfold.
- D. Its body flattens out.

13. In its life cycle, a butterfly goes through stages. Which activities match with stages correctly?



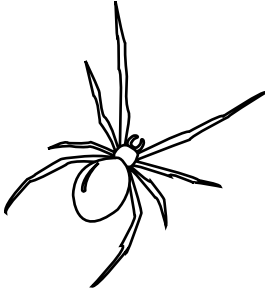
- ☒ A. chrysalis – sleeping; butterfly – laying eggs
B. caterpillar – laying eggs; chrysalis – eating
C. egg – eating; butterfly – sleeping
D. caterpillar – mating; egg – finding food
-

14. Why does a caterpillar form a chrysalis?



- A. to show off its beautiful colors
☒ B. to protect itself
C. to create food for itself
D. to attract other animals

15. Which of the following is true about spiders?



- A. The shape of a spider's body changes many times.
- ☒ B. Baby spiders look like adult spiders.
- C. Spiders develop different body parts as they get older.
- D. Baby spiders are the same size as adult spiders.

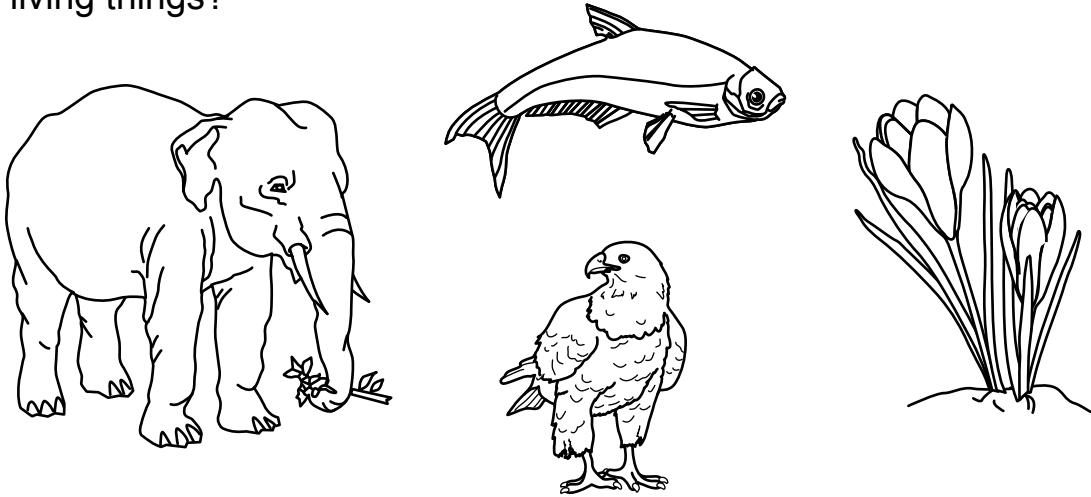
16. Look at the chart about insects and spiders. Which boxes should be left blank in the spider column?

X = It has this body part.

Body Parts	Insects	Spiders
jointed legs	X	
exoskeleton	X	
antennae	X	
eyes	X	
wings	X	
mouth	X	

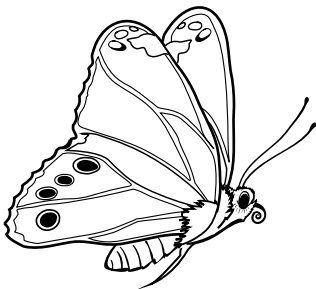
- A. mouth and jointed legs
- ☒ B. antennae and wings
- C. exoskeleton and eyes
- D. wings and mouth

17. Which statement describes butterflies and is also true for other living things?



- ☒ A. They grow and change.
- B. They live alone.
- C. They communicate with sounds.
- D. They give food to each other.
-

18. Monarch butterflies travel 25-50 miles a day at certain times of the year. Why is this?



- A. They enjoy flying.
- B. They are seeking new mates.
- ☒ C. They travel away from areas with cold winters.
- D. They are lost and looking for help.